

Protos is a destination for energy, innovation and industry. This community newsletter provides an update on progress at the site and what's coming up.



Ince Biomass Plant at Protos

AT A GLANCE

We have been awarded Government funding for a new carbon capture, utilisation and storage (CCUS) demonstrator project at the Ince Biomass facility at Protos.



Through partnership with Invest Net Zero Cheshire, we are also helping to find other ways to decarbonise industry.

There are also updates on infrastructure works and the Protos Community Benefit Fund inside.



The Protos Community Forum AGM is being held over Zoom at 6.30pm on 14th July.

LATEST NEWS

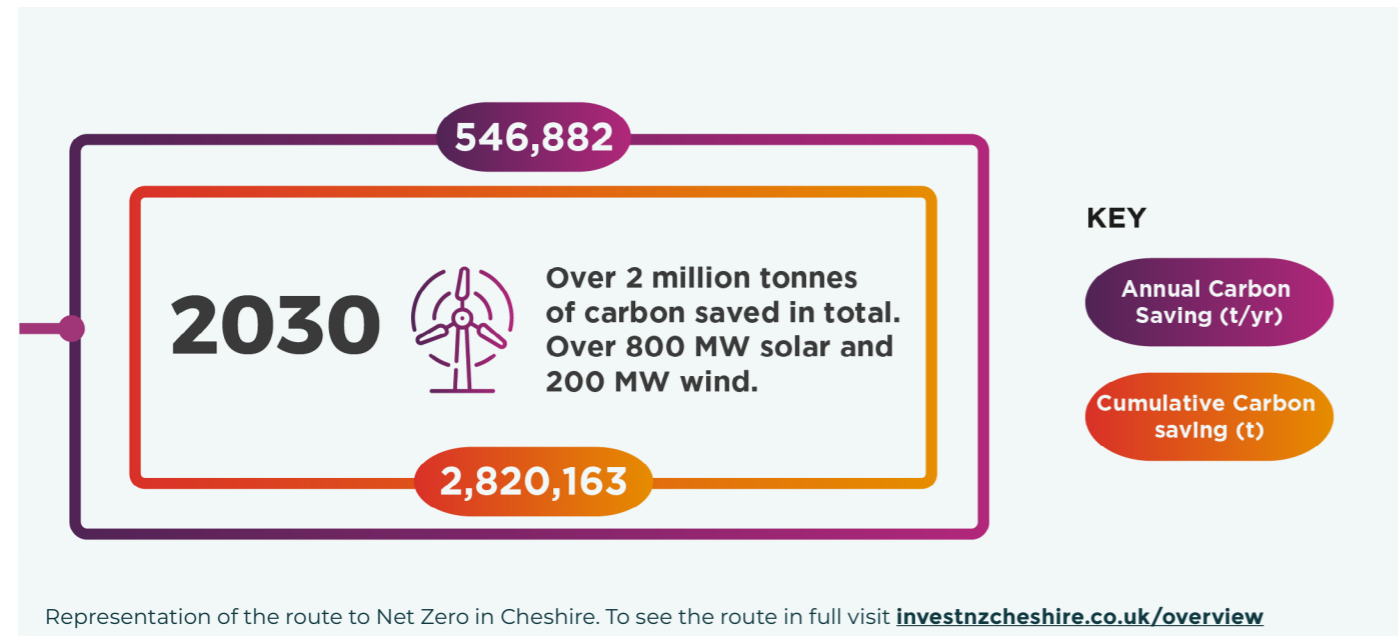
INCE BIOMASS PLANT CHOSEN FOR INNOVATIVE CARBON CAPTURE PROJECT AT PROTOS

Peel NRE and waste to energy provider Bioenergy Infrastructure Group (BIG) have been awarded £250,000 from Government for the Ince Bioenergy Carbon Capture and Storage (InBECCS) project based at Protos.

InBECCS will include designing a carbon capture demonstration facility at the Protos biomass plant, Ince BioPower, which could be the first negative emissions project in the North West.

Bioenergy with carbon capture and storage (BECCS) will be vital to reaching net zero carbon emissions by 2050. The funding will support phase one of the project which includes the design of a 20 tonne CO₂ per day demonstrator. Following completion of phase one, there is the potential for a further £5m to be made available by Government to fund construction.

CONTINUES ON NEXT PAGE...



INVEST NET ZERO CHESHIRE

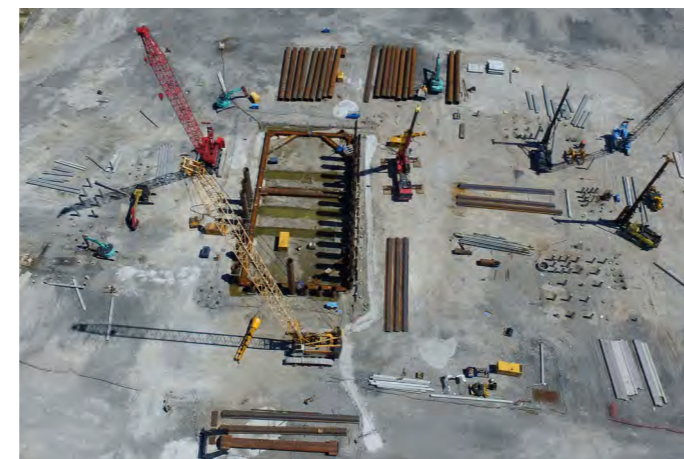
Reaching net zero carbon emissions will require the decarbonisation of the whole industrial energy system across heating, transport and power. Invest Net Zero Cheshire is a new project that looked at what's required to decarbonise industry in the region. It has set out a roadmap to net zero which identifies a range of low carbon energy projects, across renewables, hydrogen, carbon capture, energy storage, and smart grids.

Protos was highlighted as being an important project within Cheshire that will make a significant contribution to the decarbonisation of industry in the area.

For more information visit: investnzcheshire.co.uk

CONSTRUCTION CONTINUES AT ENERGY RECOVERY FACILITY

Building work has started on the new Protos Energy Recovery Facility (ERF). Each year it will process up to 400,000 tonnes of waste that would otherwise be sent to landfill to generate 49MW of energy. The facility is being built through a joint venture between Mytilineos and Standardkessel Baumgarte. Both companies are internationally recognised for their expertise in the energy sector. Once the Protos ERF is built, energy from waste specialists at Covanta will operate and maintain the facility.



The next few months will see a continuation of piling works for the new building and entrance road, bunker works and the construction of welfare facilities, a lay down area and the site car park.

Piling is set to continue until November this year. The construction team is doing its best to minimise any disturbance, however, depending on weather conditions, neighbours may be able to hear some noise during the day. The team apologises for any inconvenience, and you can contact them at info@protoserf.com if you have any concerns.

Looking ahead, we anticipate that there will be around 450 workers on site at the peak of construction and approximately 50 new permanent jobs will be created when the site becomes fully operational in 2024. The facility will also aim, wherever possible, to use local suppliers in its supply chain.

For further details, visit our construction project website, protoserf.com

INFRASTRUCTURE WORKS AT PROTOS

The next phase of infrastructure works at Protos are on track. By the end of June, we hope to have finished the first phase of ground establishment for new roads on the estate.

The majority of the piling works have now been completed with only a small amount of further piling planned in late summer/early Autumn for up to three weeks.

In July and August, further work will start on the new roads and access tracks, as well as the West Central Drain Bridge. The existing berth buildings will be surveyed and demolished to make space for new infrastructure.

New service corridors will be installed over the coming months, to provide businesses locating at Protos with the water, power and data connectivity required for their operations.

The construction of the substations is complete, the associated infrastructure [mainly cabling and ducting] is almost finished and commissioning of the system is underway.

Sisk, the principal contractor undertaking the phase 2 infrastructure works at Protos, has chosen Claire House as their chosen charity for 2021. We will update on their fundraising efforts in our next Protos community update.

To improve security and combat anti-social behaviour, we will shortly be submitting a planning application for site-wide CCTV. We are also updating the Protos signage to support movement around the site.



Our map of the nature areas shows where it is safe to walk through Protos, both during construction and day-to-day operations.

For a full downloadable version of the map visit:

protos.co.uk/community/nature

PROTOS COMMUNITY FORUM AGM

The Community Forum is made up of local representatives and provides a link between Protos and the local community. It meets every quarter and discusses anything relating to the construction and operation of Protos. Each year we hold an Annual General Meeting (AGM), which members of the public are able to attend.

This year's AGM will be an online meeting and will be held on **14th July at 6.30pm** where the Chair will provide a summary of activity over the last 12 months and members of the Protos team will be available to take questions from local residents.

To register to attend please email community@protos.co.uk or call **0800 689 1095**

GOLDFINCH MEADOWS AND SNIPE HAVEN

We have been working with Cheshire Wildlife Trust to manage the nature areas at Protos.

Here's what's been happening!

Winter migrating birds, such as **redwings** and **fieldfares**, have now departed and are back at their breeding grounds in Iceland and Russia, about 500 miles away!

Water voles have been very active since the beginning of April, with lots of signs found on two of the ditches on Snipe Haven.

A pair of **Garganey**, a rare breeding bird in the UK, was spotted on one of the ponds in our nature areas in early spring. Other birds have been breeding in Snipe Haven and Goldfinch Meadows including **moorhen**, **coots**, **mallards** and **gadwalls**.

There are lots of **wildflowers** out and in flower, including **ragged robin**, **oxeye daisy**, **red campion**, **buttercup** and **yellow flag iris**.

Work will be underway in late June to improve water retention in the ditch network in Snipe Haven, to provide even **better habitats for water voles**.



Garganey nest



Oxeye daisy



Yellow flag iris



Ragged robin

As always, Goldfinch Meadows is open to the public, and the summer months are an ideal time to enjoy the nature area. To keep the breeding birds safe, it is important dogs are kept on leads during the current bird nesting season. Dogs which are off lead and running into the pond and ditches on Goldfinch Meadows can disturb adults from their nests, and may even trample nests, injuring chicks.

COMMUNITY BENEFIT FUND

We were really pleased to see how the Protos Community Fund helped to improve the Elton allotments.

The Fund also supported the Elton Village Youth Hub and provided equipment for the bowling green at Helsby Sports Club.

In the coming months, we expect the refurbishment of the Grade II listed lamp in Ince village to be completed which Ince Parish Council will be celebrating with a firework display.



Elton allotments

Peel NRE has contributed a further **£50,000** to local initiatives in 2021, an increase of **£10,000** on last year.

To apply for funding, visit: [protos.co.uk/how-to-apply](https://www.protos.co.uk/how-to-apply)

WHAT IS PROTOS?

Protos is Peel NRE's destination for energy, innovation and industry. Located at Ince, the £700m strategic energy hub clusters complementary businesses, including resource recovery and energy intensive industries, associated supply chain and energy generation.

PROTOS

 **Peel NRE**
PART OF PEEL L&P

Get in touch for more information on Protos

Visit: [protos.co.uk](https://www.protos.co.uk)

Email: community@protos.co.uk

Call: **Freephone 0800 689 1095** (During office hours Mon-Fri).

You can also follow us on **Twitter @ThisIsProtos** **Linkedin Protos**